

1 Vagyodás Amerika Után
(Singing for America)

Ervin Nyiregyházi
February-March 1931

Arvo Smeder

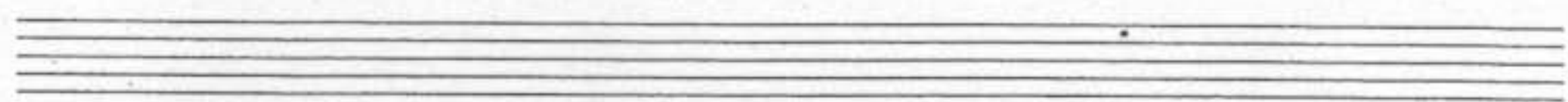
Andante

Handwritten musical notation for the first system. The top staff is in treble clef with a C major key signature and a common time signature. The bottom staff is in bass clef. The music consists of chords and melodic lines. A dynamic marking 'mf-f' is present in the first measure. Chord symbols like 'F' and 'C' are written above the notes. The system ends with a double bar line.

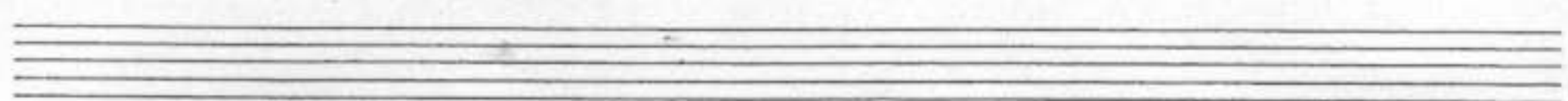
Handwritten musical notation for the second system. The top staff is in treble clef with a C major key signature and a common time signature. The bottom staff is in bass clef. The music continues with chords and melodic lines. Chord symbols like 'F' and 'C' are written above the notes. The system ends with a double bar line.

Handwritten musical notation for the third system. The top staff is in treble clef with a C major key signature and a common time signature. The bottom staff is in bass clef. The music continues with chords and melodic lines. Chord symbols like 'F' and 'C' are written above the notes. The system ends with a double bar line.

Handwritten musical notation for the first system. The top staff is in treble clef and the bottom staff is in bass clef. The music consists of several measures with various notes, rests, and chords. There are some handwritten annotations above the treble staff, possibly indicating fingerings or articulation.



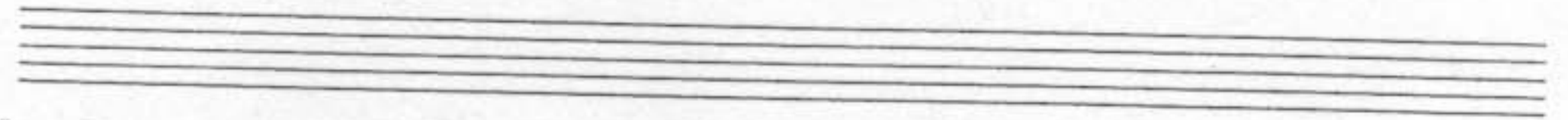
Handwritten musical notation for the second system. The top staff is in treble clef and the bottom staff is in bass clef. The music consists of several measures with various notes, rests, and chords. There are some handwritten annotations above the treble staff.



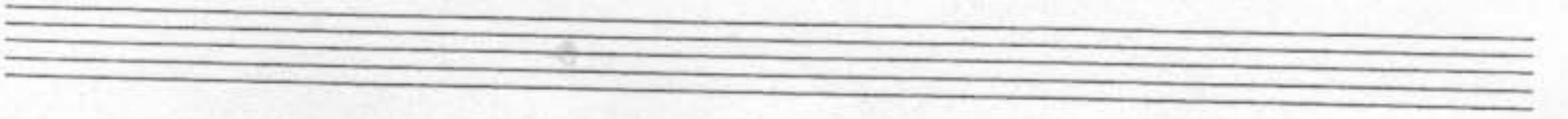
Handwritten musical notation for the third system. The top staff is in treble clef and the bottom staff is in bass clef. The music consists of several measures with various notes, rests, and chords. There are some handwritten annotations above the treble staff.

Handwritten musical notation for the fourth system. The top staff is in treble clef and the bottom staff is in bass clef. The music consists of several measures with various notes, rests, and chords. There are some handwritten annotations above the treble staff.

Handwritten musical notation for the first system. The top staff is in treble clef and contains several measures of music with notes and rests. The bottom staff is in bass clef and contains chords and melodic lines. There are some handwritten annotations above the first few measures.



Handwritten musical notation for the second system. The top staff is in treble clef and contains several measures of music with notes and rests. The bottom staff is in bass clef and contains chords and melodic lines. There are some handwritten annotations above the first few measures.



Handwritten musical notation for the third system. The top staff is in treble clef and contains several measures of music with notes and rests. The bottom staff is in bass clef and contains chords and melodic lines. There are some handwritten annotations above the first few measures.

Handwritten musical notation for the fourth system. The top staff is in treble clef and contains several measures of music with notes and rests. The bottom staff is in bass clef and contains chords and melodic lines. There are some handwritten annotations above the first few measures.



Handwritten musical notation for the first system, consisting of two staves with treble and bass clefs. The music features complex chordal textures with many sharps and accidentals, and includes some slanted lines connecting notes across staves.

Two empty musical staves.

Handwritten musical notation for the second system, consisting of two staves. It includes a 3/4 time signature, a treble clef, and a bass clef. The notation is dense with notes and accidentals.

Handwritten musical notation for the third system, consisting of two staves. The notation is primarily chordal with many sharps and accidentals.

Handwritten musical notation for the fourth system, consisting of two staves. The notation is primarily chordal with many sharps and accidentals.

Two empty musical staves.



Handwritten musical notation for the first system. The treble clef staff contains a melodic line with eighth and quarter notes, some with slurs. The bass clef staff contains a bass line with whole and half notes. The key signature is two sharps (F# and C#).

Handwritten musical notation for the second system. The treble clef staff continues the melodic line. The bass clef staff continues the bass line with whole and half notes.

Handwritten musical notation for the third system. The treble clef staff continues the melodic line. The bass clef staff continues the bass line with whole and half notes.

Handwritten musical notation for the fourth system. The treble clef staff continues the melodic line. The bass clef staff continues the bass line with whole and half notes.

Handwritten musical notation for the fifth system. The treble clef staff continues the melodic line. The bass clef staff continues the bass line with whole and half notes, ending with a double bar line and repeat signs.

Handwritten musical notation on a two-staff system. The top staff contains a series of vertical lines. The bottom staff contains notes with stems and beams, some with slurs. A bracket underlines the notes from the second measure to the eighth measure. The word "End" is written at the end of the staff.